



uPVC Range

Superior Energy Efficiency,
Cutting-Edge Design

SEAN DOYLE WINDOWS LTD
WINDOWS • DOORS

CONTENTS

Why Choose Us?	4
Why PVC?	6
Sustainability	8-11
Window Options	12-13
Casement Windows	14-19
Picture Windows	20-23
Bay Windows	24-25
Sliding Sash Windows	26-29
Corner Windows	30-33
Door Options	35
French Doors	36-37
Sliding Doors	38-41
Residential Doors	42-44
The Finer Details	45-46

*uPVC from Sean Doyle Windows Ltd...
Precision made, Perfectly fitted.*



WHY CHOOSE SEAN DOYLE WINDOWS LTD?

Since 1979, Sean Doyle Windows Ltd. has been dedicated to delivering quality, reliability, and skilled craftsmanship to your home.

At Sean Doyle Windows Ltd., Ireland's trusted name in windows and doors, we're more than just a supplier—we're a family business, now three generations strong, committed to bringing the very best to Irish homes. Every product we offer is designed, handcrafted, manufactured, and expertly assembled by our team in our Irish Factory, meeting the highest Irish standards for quality and durability.

OUR WINDOWS & DOORS

We offer a wide range of windows and doors - aluminium, uPVC, aluclad, and hardwood—tailored to suit the diverse needs of homeowners throughout Ireland. All of our products are carefully crafted in our Irish factory and are available for viewing in our Roscommon or Dublin showroom.

WHY CHOOSE US?

As a family-run business, we pride ourselves on our reputation for excellence, our years of experience, and our unwavering commitment to meet your needs with the care and expertise only family can offer. Whether you're choosing a single window or updating an entire home, you can trust Sean Doyle Windows Ltd to deliver quality, integrity, and unmatched service.

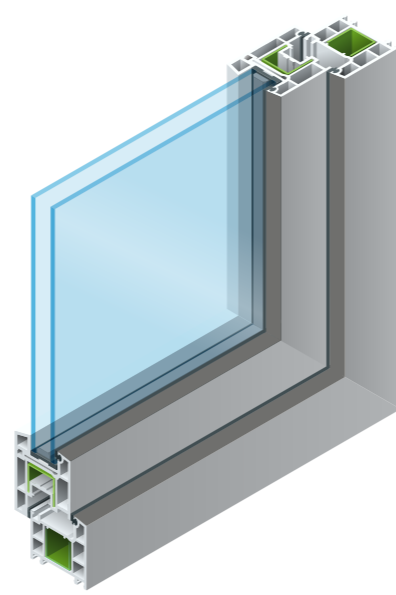


Sean Doyle Windows LTD - Crafted with Care Since 1979



WHY CHOOSE uPVC FOR YOUR HOME?

uPVC (unplasticised polyvinyl chloride) has become one of the most popular materials for windows and doors in modern homes. Known for its durability, low maintenance, and excellent insulation properties, uPVC offers a practical and cost-effective alternative to traditional timber or aluminium. Whether you're renovating or building new, uPVC provides long-term benefits in terms of performance, security, and style.



- 1. Energy Efficiency.** uPVC frames provide excellent insulation, helping to reduce heat loss in winter and keep homes cool in summer, which can lower energy bills.
- 2. Durability.** Unlike wood, uPVC does not rot, warp, or corrode over time. It is resistant to moisture, pests, and weather damage.
- 3. Low Maintenance.** uPVC requires minimal upkeep; it does not need to be repainted or sealed. Regular cleaning with soapy water is enough to keep it looking new.
- 4. Affordability.** Compared to aluminum or wood, uPVC windows and doors are often more cost-effective while still offering great performance.
- 5. Sound Insulation** uPVC windows, combined with double or triple glazing, provide excellent noise reduction, creating a quieter and more comfortable home environment.
- 6. Security** Modern uPVC windows and doors come with multi-point locking systems, making them secure against break-ins.
- 7. Eco-Friendly.** Modern uPVC products are now fully recyclable, helping to minimise waste and reduce their overall environmental impact.
- 8. Variety of Styles and Colors** Available in different finishes, including wood-effect laminates, to match various architectural styles.



All Sean Doyle windows are backed by a 10 year guarantee

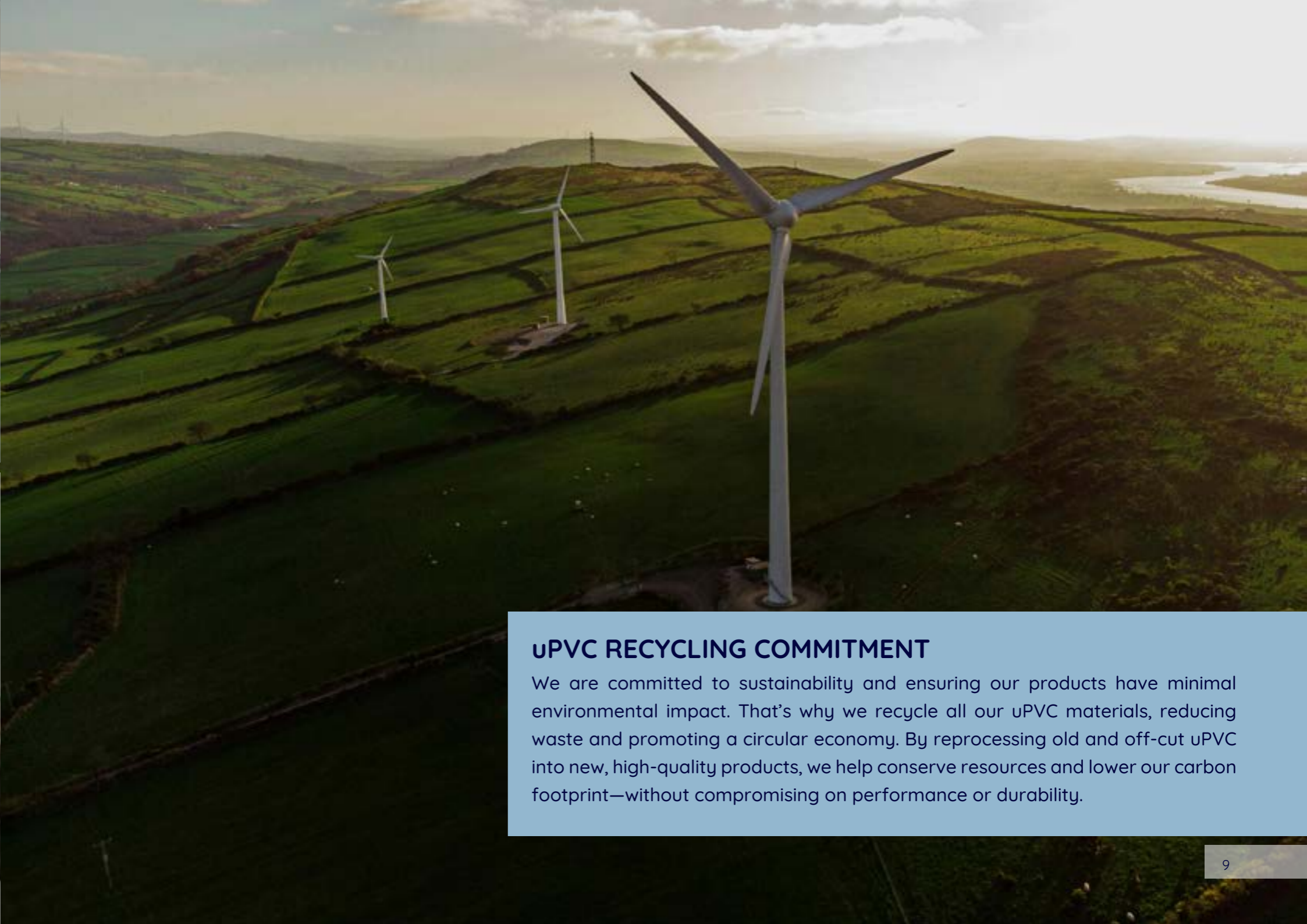
SEAN DOYLE WINDOWS LTD: QUALITY CRAFTSMANSHIP MEETS SUSTAINABLE MATERIALS

At Sean Doyle Windows Ltd, we're proud to manufacture our premium uPVC windows right here in our Irish factory, using industry-leading Kömmerling uPVC profiles. This partnership allows us to combine our expertise in window design and manufacturing with Kömmerling's commitment to quality and environmental responsibility.

For over two decades, Kömmerling's lead-free "greenline" uPVC has prioritised health and environmental safety, helping us ensure our windows meet the highest environmental standards.

We support a circular economy through recycled materials and bio-attributed PVC, replacing fossil fuels with renewable tall oil. Kömmerling also recycles end-of-life uPVC windows, integrating high-quality recycled material into new profiles.

Our windows offer outstanding thermal insulation, reducing energy use and lowering carbon footprints. By choosing Sean Doyle Windows Ltd, manufactured with Kömmerling uPVC in our Irish factory, you invest in quality, sustainability, and local craftsmanship.



uPVC RECYCLING COMMITMENT

We are committed to sustainability and ensuring our products have minimal environmental impact. That's why we recycle all our uPVC materials, reducing waste and promoting a circular economy. By reprocessing old and off-cut uPVC into new, high-quality products, we help conserve resources and lower our carbon footprint—without compromising on performance or durability.

SEAN DOYLE WINDOWS LTD – *greenline* LEAD-FREE uPVC WINDOWS & DOORS

At **Sean Doyle Windows Ltd**, we are proud to offer our **Greenline**® lead-free uPVC window and door range, an environmentally responsible choice that delivers outstanding performance, durability and value.

Greenline® is a modern uPVC formula that completely excludes lead from the production of window and door profiles. Using an eco-friendly calcium-zinc stabiliser instead of traditional heavy metals means these products meet stringent environmental standards and help protect our planet for future generations.



Why Choose **Greenline**® uPVC Windows & Doors?

ENVIRONMENTALLY FRIENDLY

Lead-free stabilisers reduce toxic heavy metals in building products. **Greenline**® windows and doors are entirely recyclable, lowering your carbon footprint from manufacture through end-of-life.

SUPERIOR PERFORMANCE

Excellent weather resistance for long-lasting exterior performance. Strong resistance to UV radiation – keeps colour and finish stable. Exceptional thermal insulation properties help save energy and reduce heating costs.

VALUE & QUALITY

Adds value to your property through durability and energy performance. Low maintenance with a lasting satin gloss finish that stays looking good for years. Cost-efficient option offering a long service life and excellent value for money. Designed to meet high security and building standards, including PAS-24 certification.

RESPONSIBILITY AND PERFORMANCE IN MIND

Greenline® is part of a long-term commitment to sustainability. By choosing these products, you benefit from the recognised advantages of traditional UPVC (durability, thermal efficiency and low upkeep) with the added benefit of modern, lead-free technology at no extra cost.

greenline®



“From initial contact Sean Doyle and his team were a pleasure to deal with. We spoke to a number of suppliers and received a number of varying quotes. Sean Doyle Windows quote was competitive, their product perfect. We couldn't be happier with our windows and doors. I would highly recommend Sean Doyle Windows Ltd.”

PAULA SHARKEY

IMPROVE YOUR HOME'S ENERGY EFFICIENCY AND COMFORT

Enhancing your home's energy efficiency not only makes it more comfortable but also reduces your energy usage and lowers your bills. It also helps minimise the environmental impact of heating and powering your property.

Windows from the **Kömmerring** range deliver all these benefits. Featuring a five-chambered profile, precision-engineered frames, and outstanding seal integrity, they offer best-in-class energy efficiency—outperforming other 70mm window systems on the market.

Heat loss through building materials is measured using a U-value; the lower the U-value, the better the insulation and the less heat escapes. **Kömmerring** Windows achieve an impressive U-value of just 1.2 W/(m²K), making them highly effective at retaining heat.

This performance meets the latest Building Regulations for new and replacement windows and doors, introduced in 2022.



CASEMENT

Casement windows are popular in Ireland for their hinged design, opening from the side or top to provide excellent ventilation and clear views. They also offer strong security and a tight seal for good energy efficiency, making uPVC casement windows suitable for both modern and traditional homes.



SLIDING SASH

uPVC sliding sash windows combine the classic look of traditional timber sash windows with modern, low-maintenance materials. Their vertically sliding design allows for good ventilation and clear views, while multi-point locking systems improve security. They also offer strong thermal insulation, helping to keep homes warm.



BAY WINDOW

uPVC bay windows give the impression of increased space through their extended window sill, while allowing an abundance of natural light into the home. They add versatile living space and enhance views of the outdoors, while also boosting kerb appeal that lasts for years. Durable and energy efficient, they are a practical and attractive choice for many homes.



PICTURE

Picture windows are large, fixed windows designed to maximise natural light and provide clear, unobstructed views. With slim frames and no opening function, they frame the outdoors like a picture, making them ideal for showcasing scenery and brightening living spaces.



CORNER WINDOW

uPVC corner windows are a cost-effective choice, offering excellent insulation and low maintenance. Available in a range of colours and finishes, they suit many home styles while providing wide, open views that help brighten living spaces. Although the frames are thicker than aluminium options, they remain a strong option for homeowners seeking an energy-efficient solution.



TILT & TURN

uPVC tilt & turn windows are a practical choice, offering excellent insulation and low maintenance. Their dual-opening design allows for secure ventilation or full opening, while providing clear, open views that help brighten living spaces. With strong frames and modern locking systems, they remain a reliable option for homeowners seeking an energy-efficient solution.

INTRODUCING THE ENERGY-EFFICIENT ODYSSEY C70 COLLECTION

Sean Doyle Windows Ltd have built a strong reputation for delivering high-quality products, offering a wide range of solutions, including hardwood, uPVC, aluminium, vertical slides, shop fronts, curtain walling, and conservatories. Serving both commercial and residential sectors, the company is committed to excellence in craftsmanship and customer satisfaction.

Always at the forefront of quality and value, Sean Doyle Windows Ltd now introduces the energy-efficient Odyssey C70 Collection, providing customers with advanced energy-saving solutions.

In partnership with Profine, a leading German PVC manufacturer with over a century of expertise, the company ensures premium-quality products from research and development to production, all with a focus on sustainability and responsible recycling. Profine has combined three globally respected PVC brands - KBE, Kömmerling, and Trocal - each known for their high standards and reliability.

As a trusted name in the Irish market, Sean Doyle Windows Ltd is proud to introduce the C70 collection, featuring five-chambered energy-efficient systems that surpass outdated three-chambered technology. With a state-of-the-art Irish factory and showrooms in Dublin and Roscommon, the company is ideally positioned to bring cutting-edge window and door solutions to homes across the country.



Bringing style, security, and peace of mind to Irish homes — trust in windows made to last



Innovation, efficiency, and sustainability - Sean Doyle Windows Ltd brings the next generation of energy saving solutions to the Irish market with the Odyssey C70 Collection.





CASEMENT WINDOWS

TECHNICAL DETAILS - CASEMENT WINDOW SYSTEM

- Open out window system.
- Glazing thickness options, 28-44mm.
- Frame sizes 57, 67 and 85mm.
- Transom/Mullion sizes 74, 84 and 110mm.
- Profile range can be constructed to form fixed and opening lights.
- Optional centre seal available for 57mm frame to help with thermal performance.
- Max top hung size 1200x1400mm.
- Max side hung size 800x1400mm.
- Full range of ancillary profiles available to accommodate a range of installations.

“We recently had all of our windows and doors replaced by Sean Doyle. At the ordering stage Sean walked us through all our options and was very thorough. Edgar was in charge of the installation which took a number of days. Both him and his colleague worked hard and took care to complete their work to a high standard making sure to tidy up at the end of each day. We couldn’t be happier with our new windows and doors which have a very high quality finish. We would definitely recommend Sean Doyle Windows.”

MARY MCGRATH



Windows that cut energy bills - without cutting corners.

PERFORMANCE DETAILS:

Wind Load	Class C4
Air	Class 4
Water	Class 9A
Acoustic	Rw up to 45dB (depending on glass used)
U Value	1.2 W/m ² K double glazed and 0.80 W/m ² K triple glazed



SUPER STRENGTH PROFILES = LARGE PANEL SIZES
Max top hung size 1200x1400mm, max side hung size 800x1400mm.



THERMAL INSULATION VALUE
UF = 0.79 W/(M²K)



WEIGHT REDUCTION
Weighs approx. 25% less compared to sashes with steel.



STANDARDISED MANUFACTURE
No additional steps required.



SUSTAINABILITY
Intelligent recycling process. All of the materials are reused.

Uw
1.2
W/m²K
double glaze

Uw
0.80
W/m²K
triple glaze

ODYSSEY uPVC WINDOWS

Our exclusive **Odyssey Collection** has one of the highest energy indexes of any uPVC window on the Irish market and one of the highest certifications from NSAI which helps to conserve energy. The Odyssey range features high impact, lead free, German manufactured uPVC with reinforced steel frames and high-density insulating foam. It is available in both double and triple glazed sealed units which, due to the innovative technology involved, makes it most suited to low energy and passive homes saving you money on heating costs. Other features of the Odyssey range include a multi-point locking system, featuring 3 air-tight seals, high quality glass and can be manufactured without V welds which helps to give a seamless contemporary look to your home.

The **Odyssey Collection** of windows features a unique five-chambered, engineered design which allows more cost-effective glass to be used in meeting the required energy ratings, thereby allowing us to pass on the savings to our customers. The **Odyssey Collection** also enjoys top range weather and heat and sound insulation with u values as low as 0.8 w/m²K.





PICTURE WINDOWS





A-RATED

The Odyssey uPVC windows are A-rated for excellent energy efficiency and thermal performance.



EXCELLENT NOISE PROTECTION

The range provide superior sound insulation.



SECURE AND AIR-TIGHT

These windows are equipped with a multi-point locking system that features three airtight seals, enhancing both security and energy efficiency.



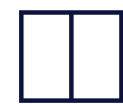
COLOUR

Availabe in 14 colours and finishes, including white, wood grains, plain colour and metallics.



GUARANTEE

All Sean Doyle windows are backed by a 10 year guarantee.



STYLE

All uPVC are available in Casement, Tilt & Turn, Picture and Sliding Sash openings.



ENVIRONMENT

These windows are completely recyclable, making them an environmentally friendly choice.



All **Odyssey** windows are fitted with a Yale twin-cam security lock as standard. On seeing for yourself the different ranges of uPVC products you should be in a better position to choose the right product for your home and budget.

All our products are installed by Sean Doyle Windows' in-house fitters – we never use subcontractors. This ensures complete control over every stage, from design and manufacturing to installation, giving you total peace of mind. We also provide a comprehensive after-sales service, including a full snag check on all projects.

Each component in our **Odyssey Collection** windows are independently accredited with the security-backed PAS certificate. All our Odyssey windows meet PAS-24 standards, which guarantees the highest security. All our products are tested to the highest Irish standards to guarantee you peace of mind.



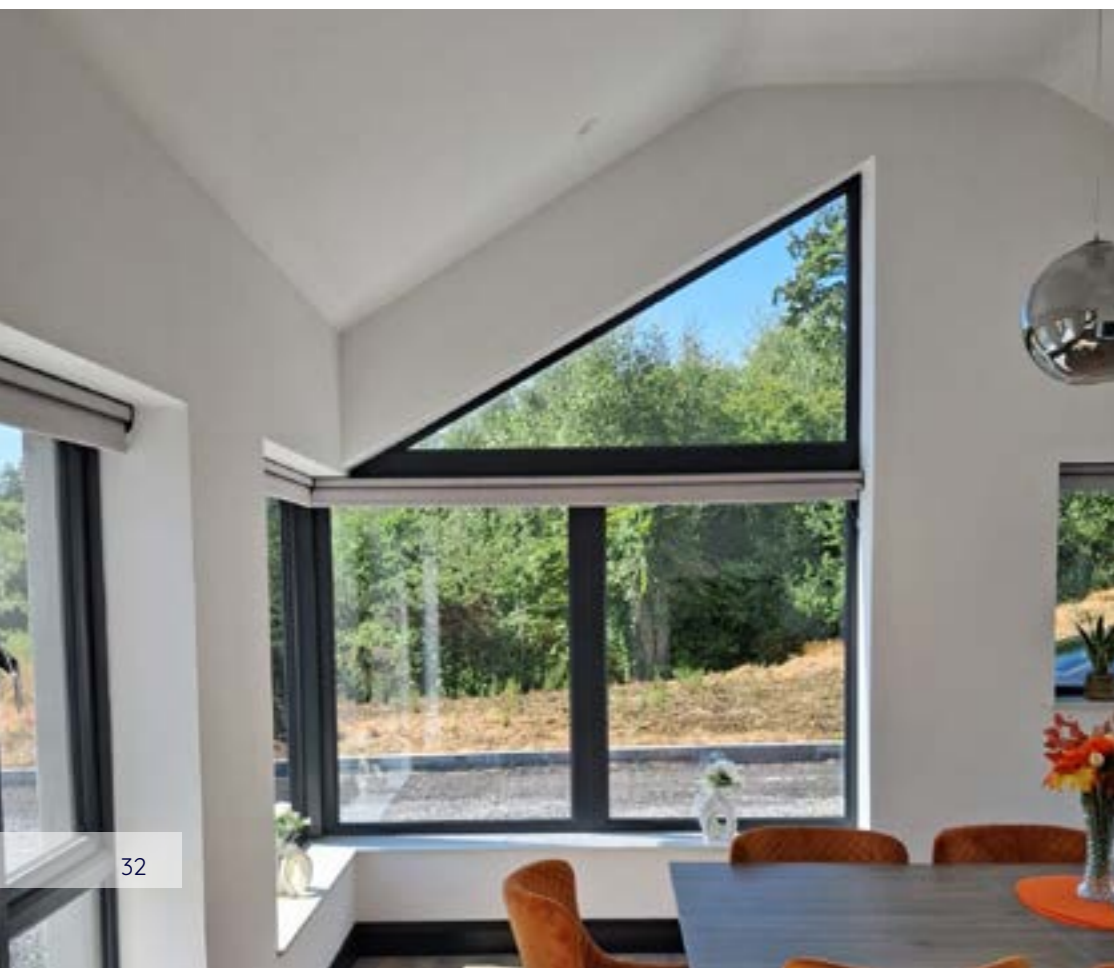
SLIDING SASH WINDOWS



SLIDING SASH WINDOWS



CORNER WINDOWS



CORNER WINDOWS

Do you want windows and doors that offer excellent noise insulation, strong security against break-ins, and advanced thermal efficiency to reduce heating costs? So do we. That's why the **Kömmerling C70** double seal window and door system delivers exactly that.

With a slim 70 mm profile, it offers classic design, flexible options, and top performance.

WINDOWS

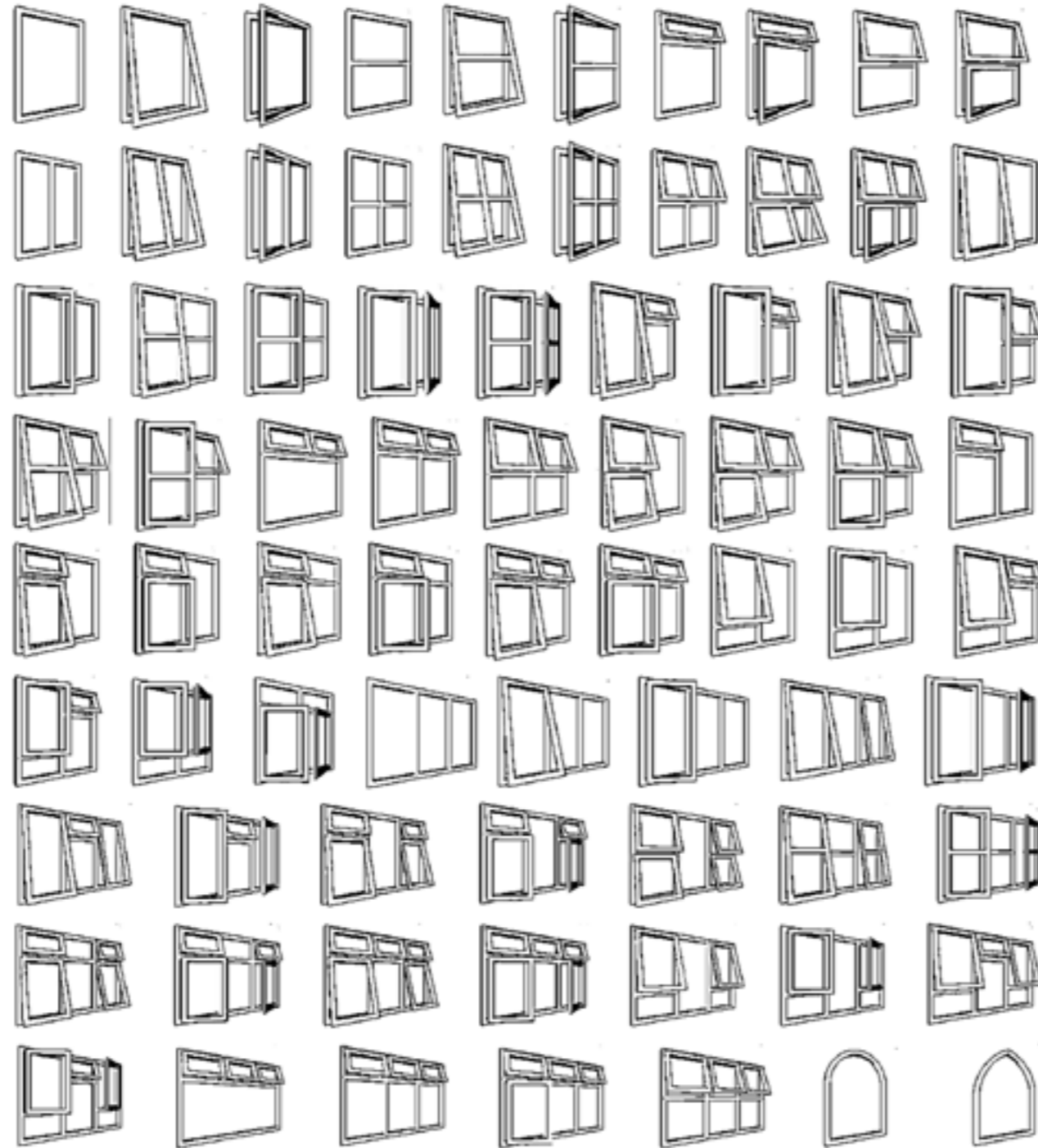
The C70 energy-efficient system from Sean Doyle Windows Ltd is a groundbreaking product designed to meet all the requirements of passive house construction.

With over 45 years of experience, **Sean Doyle Windows Ltd** is proud to be the first company to introduce the C70 product to the Irish market.

The innovative **Odyssey Collection** features a unique five-chambered engineered design, allowing for the use of more cost-effective glass while still achieving the required energy ratings. This efficiency enables the company to pass on savings directly to customers.

With improved window energy ratings and low U-values, these advanced window and door systems offer both energy efficiency and cost savings for homeowners.

Studies estimate that a typical three-bedroom detached house can reduce electrical and heating bills by 10-25%, making these energy-saving solutions a smart investment for the future.



DOORS



FRENCH DOORS

uPVC French Doors are a practical choice, offering excellent insulation and low maintenance. Their double-opening design creates wide, unobstructed access to outdoor areas while allowing plenty of natural light to flow into the home. With strong frames and modern locking systems, they remain a reliable option for homeowners seeking an energy-efficient and secure solution.



SLIDING DOORS

uPVC Sliding Doors are ideal for creating large glass openings that maximise natural light and outdoor views. Their space-saving design glides smoothly along a track, making them perfect for rooms where swing-open doors are not practical. Durable, low maintenance, and energy efficient, they offer a modern solution for connecting indoor and outdoor living spaces.



RESIDENTIAL DOORS

uPVC Residential Doors are a reliable choice for back and utility doors, offering high insulation and low maintenance with strong weather resistance. Their design allows plenty of natural light through glazed panels while providing secure, multi-point locking for peace of mind. Built with modern profiles that won't rot, fade, or need painting, they remain a durable and energy-efficient option for everyday home use.

DOOR OPTIONS



FRENCH DOORS

ODYSSEY FRENCH DOORS
Sean Doyle Windows Ltd. supplies elegant, secure uPVC French doors that flood your home with natural light while keeping it warm and well-insulated throughout the year. Featuring robust multi-point locking systems and high-performance glazing, these doors combine timeless style with durability and low maintenance. Their classic double-door design creates a seamless connection to your garden or patio, enhancing your living space with plenty of light and effortless access



37

36

Sean Doyle Windows Ltd. offers stylish, efficient, and secure uPVC patio doors—keeping your home warm in winter while making the most of summer. Designed for durability and smooth operation, these sliding doors provide excellent views of your garden and maximise natural light without taking up extra space.

Visit our showroom to explore the available finishes and features to find the perfect fit for your home.



SLIDING DOORS





“Excellent service & workmanship from Sean Doyle Windows Ltd. Replaced all windows and doors on our house very efficiently and it looks great. Derrick was very helpful in advising us and providing solutions to all we required.”
MAURICE DEVITT

ODYSSEY GLAZED DOORS



ADAPTABLE
Complete integration with our window systems, accepts all hardware products.



DESIGN
Wide range of colours - 14 woodgrain & coloured finishes



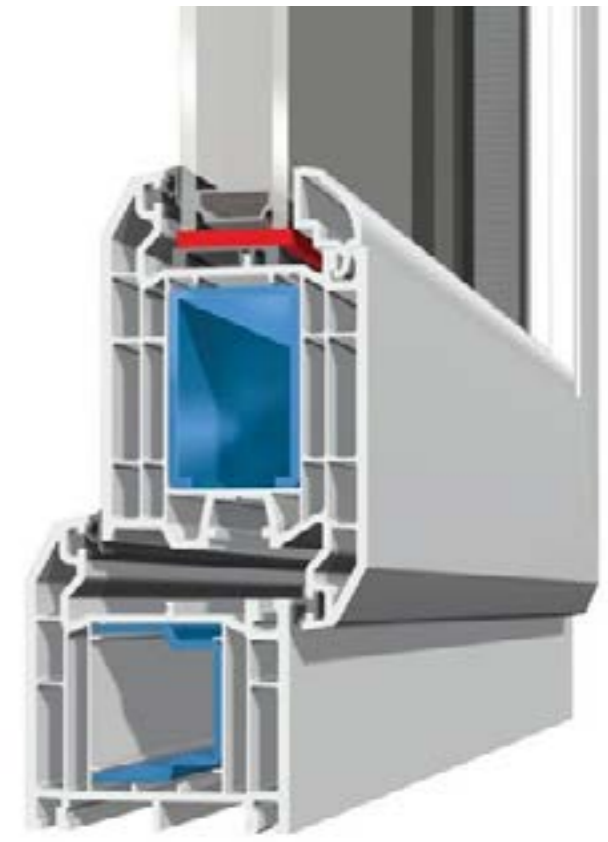
PERFORMANCE
5-chamber profile for enhanced insulation, strength, and better energy ratings.



GLAZING
Improved range of bead options for ease of glazing, 24-44mm glazing options



SUSTAINABILITY
High impact, colourfast and lead-free profiles - making it better for the environment



Local and trusted since 1979 - bringing security, style, and lasting quality to Irish homes

ODYSSEY uPVC DOORS

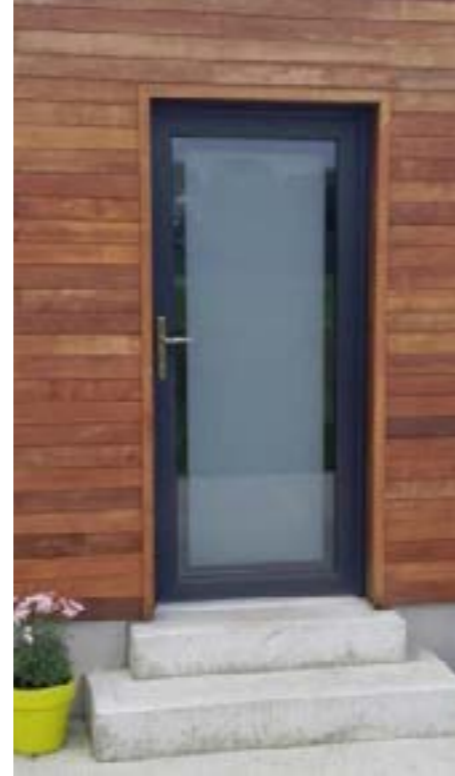
Your external doors are the first thing visitors notice, so why not make a lasting impression with Sean Doyle Windows Ltd. range of uPVC residential doors? Available in glazed or partially glazed options, our doors provide the perfect balance of natural light, insulation, security, and style.

Built with the same energy-efficient profile as our windows, they feature high-security locking mechanisms and a durable weather seal. Whether for front or back doors, Sean Doyle Windows Ltd. ensures top-level security and performance for your peace of mind.

In addition to meeting technical requirements, the design of your residential door is just as important—it reflects your home's character.

The Kömmerling 70 double seal system lets you customise a burglar-resistant door to suit your style. Choose between inward or outward opening, various panelling options, and a classic white finish or a foiled finish.

It's all up to you!



FEATURES OF THE ODYSSEY DOOR COLLECTION



A-RATED

The Odyssey uPVC doors are A-rated for excellent energy efficiency and thermal performance.



EXCEPTIONAL STABILITY

Four-chamber design with maximum-size steel reinforcement and welded corner connectors.



SUPERIOR SEALING

Double sealing at the threshold with a thermal break and a threshold connector for a precise fit.



PREMIUM QUALITY

Compatible with special functional glazing or residential door panelling up to 44 mm.



ENHANCED SECURITY

Excellent burglary protection, depending on the hardware configuration.



FLEXIBLE DESIGN OPTIONS

Available in standard PVC white or laminated finishes, including woodgrain, solid colours, and metallic tones.



GUARANTEE

All Sean Doyle windows are backed by a 10 year guarantee.



MAXIMUM DOOR LEAF SIZES:

Single-leaf residential door: 1100 x 2350 mm
Double-leaf residential door: 1000 x 2350 mm
(per leaf)



DOORS

Our exclusive Odyssey PVC door range has one of the highest energy indexes of any uPVC door on the Irish market and has the highest certification from NSAI.

Our C70 chambered system is a 5-chambered modern system, which is extruded using our lead-free uPVC Greenline compound. This system benefits from the cleaner lines of a modern chambered suite of profiles for the design conscious customer.

From traditional to contemporary, there's an Odyssey PVC door to suit every style. Available in a range of colours, designs, and finishes, our doors cater to all budgets and preferences. Choose from decorative glass, custom-built side screens, and unique panel designs.

Built for durability, your new Odyssey PVC door will stay looking great for years. Thanks to its PVC construction, it won't fade, rot, or ever need painting.





CHOOSING A COLOUR FOR YOUR uPVC PRODUCT

STANDARD



Red
RAL 3011



Golden Oak
RAL 8003



Cream
RAL 9001



Anthracite Grey
RAL 7016



Slate Grey
RAL 7015



White Grain
RAL 9010



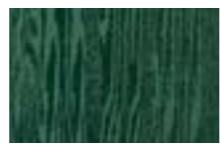
Ivory
RAL 1015



RAL 5011
Steel Blue



Rosewood
Ral 8017



Dark Green
RAL 6009



Agate Grey
RAL 7038



Silver Grey
RAL 7001



Black Brown
RAL 8022



White



Burgundy
RAL 3005



Chartwell Green
BS14 C35

All uPVC windows and doors are available in dual colour option, allowing for different colors on the inside and outside of the frame.



Colours shown should be used for guidance only as the limitations in the printing process, may mean that colours vary from those illustrated.

45 years of craftsmanship, security, and peace of mind.



SEAN DOYLE WINDOWS LTD

WINDOWS • DOORS



GET IN TOUCH

✉ sales@sdwindows.ie

🌐 www.seandoylewindows.ie

📞 **ROSCOMMON SHOWROOM**
090 6626753

📞 **TALLAGHT SHOWROOM**
01 4626671

**BOOK YOUR SHOWROOM
APPOINTMENT TODAY**

OPENING HOURS (APPOINTMENTS ONLY)

Dublin Showroom:

Monday to Friday 8.30am - 4.30pm
Closed for Lunch 1pm - 2pm
Saturday: 10am - 3pm
After 6pm by appointment (Call: 01 4626671)

Roscommon Showroom:

Monday to Friday 8.30am - 6pm
Closed for Lunch 1pm- 2pm
Saturday: 10am- 1pm
After 6pm by appointment (Call: 090 6626753)

FIND US ONLINE



Visit our Instagram page



Visit our Website

